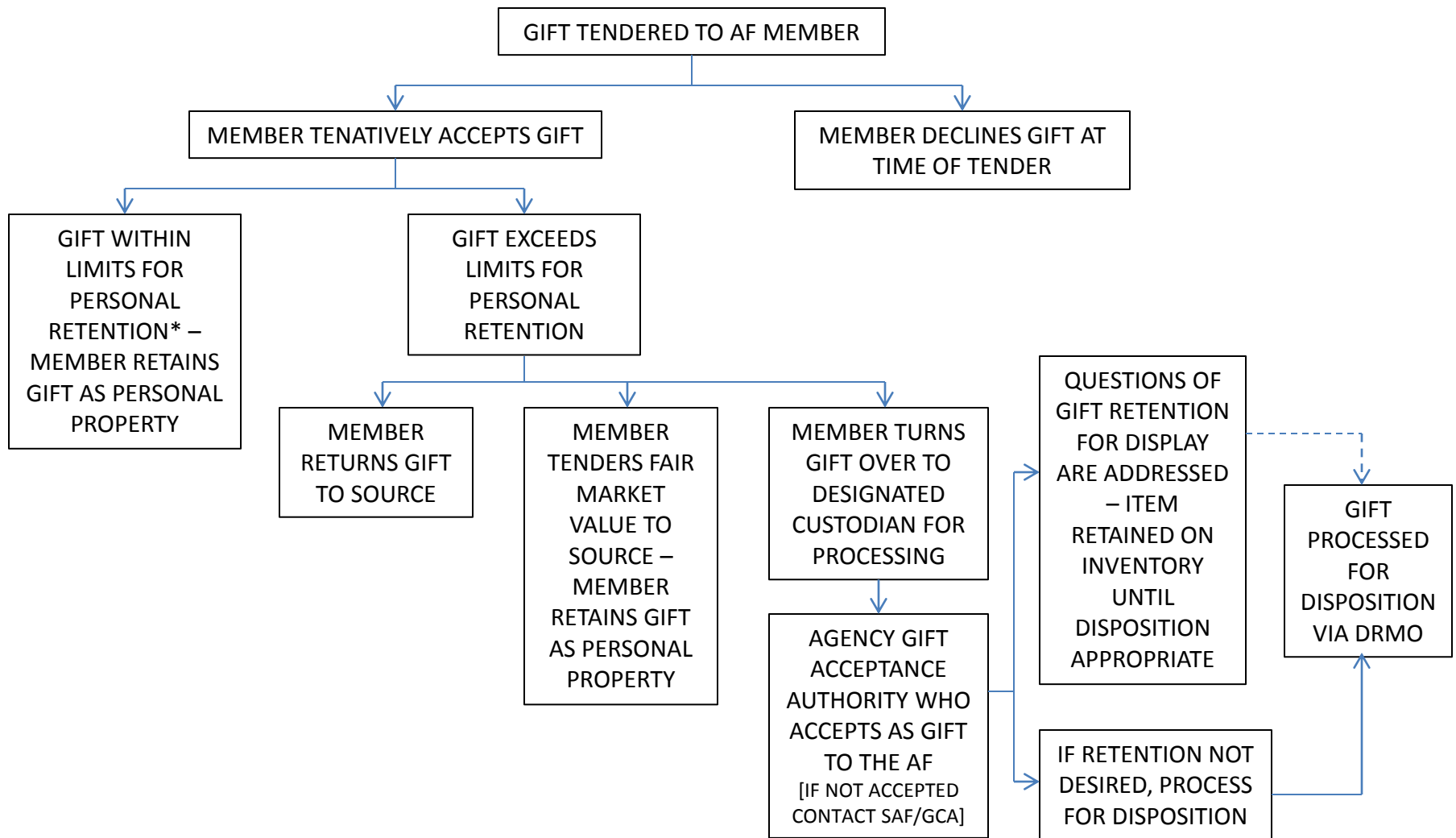


DECISION LOGIC CHART – GIFTS TO INDIVIDUALS FROM OUTSIDE SOURCES*



*FOR GIFTS OTHER THAN GIFTS FROM FOREIGN GOVERNMENTS
 *GENERALLY \$20 OR \$50 ANNUALLY FROM ONE SOURCE-SOME
 EXCEPTIONS FOR AWARDS/EVENTS/TRAVEL